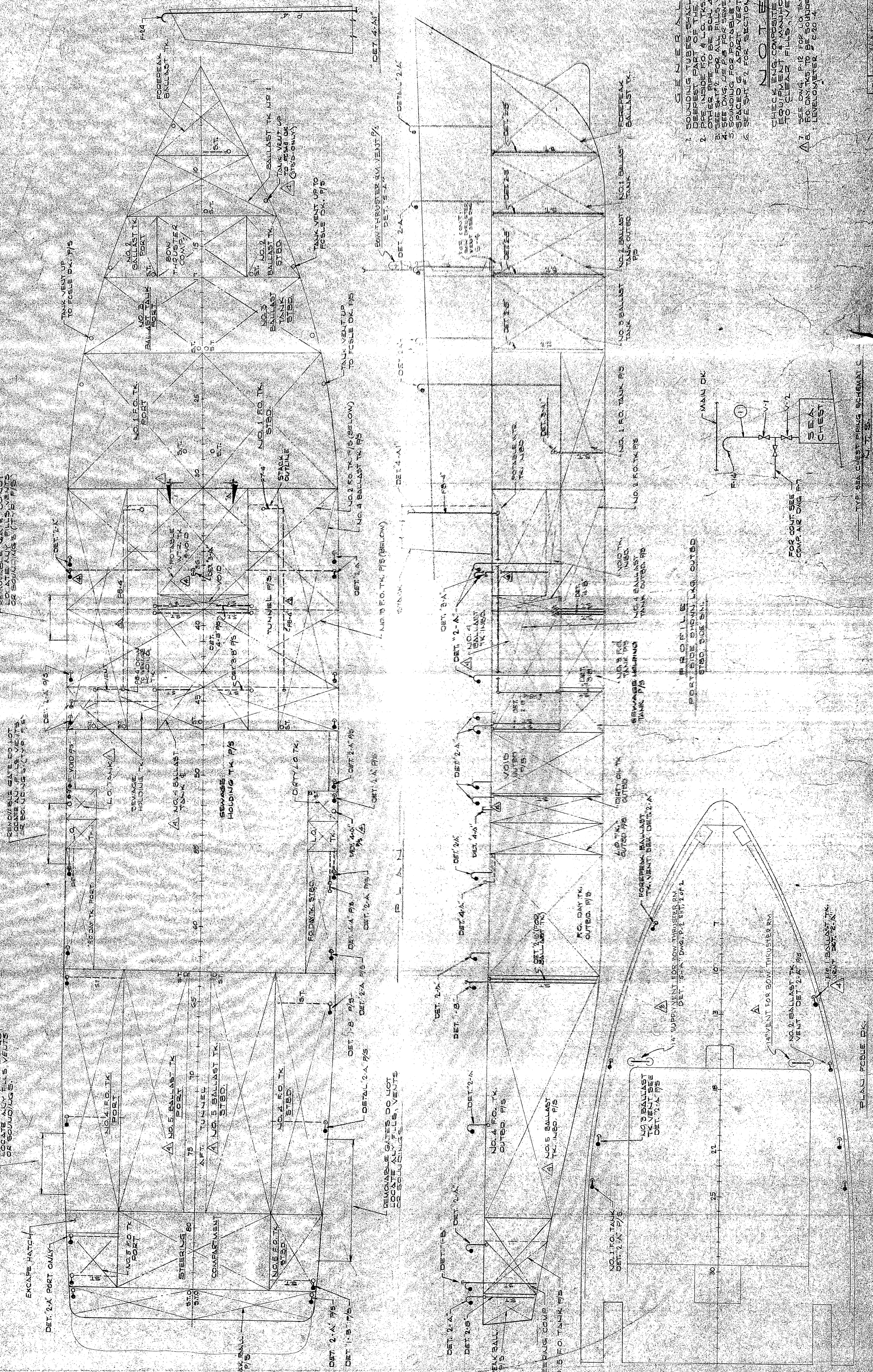


PC. QUAN.	SIZE	DESCRIPTION	CSTY. ITEM	QUAN. REQ'D	REF. DATE
F1	1/2"	PIPE SCH. 40 SMLS. BLK. ASTA. A-153	340		
F2	1/2"	PIPE SCH. 40 SMLS. GALV. ASTA. A-153			
F3	1/2"	PIPE SCH. 40 SMLS. BLK. ASTA. A-153			
F4	1/2"	PIPE SCH. 40 SMLS. GALV. ASTA. A-153			
F5	1/2"	PIPE SCH. 40 SMLS. GALV. ASTA. A-153			
F6	1/2"	PIPE SCH. 40 SMLS. GALV. ASTA. A-153			
F7	1/2"	PIPE SCH. 40 SMLS. GALV. ASTA. A-153			
F8	1/2"	PIPE SCH. 40 SMLS. GALV. ASTA. A-153			
F9	1/2"	PIPE SCH. 40 SMLS. GALV. ASTA. A-153			
F10	1/2"	PIPE SCH. 40 SMLS. GALV. ASTA. A-153			
F11	1/2"	PIPE SCH. 40 SMLS. GALV. ASTA. A-153			
F12	1/2"	PIPE SCH. 40 SMLS. GALV. ASTA. A-153			
F13	1/2"	PIPE SCH. 40 SMLS. GALV. ASTA. A-153			
F14	1/2"	PIPE SCH. 40 SMLS. GALV. ASTA. A-153			
F15	1/2"	PIPE SCH. 40 SMLS. GALV. ASTA. A-153			
F16	1/2"	PIPE SCH. 40 SMLS. GALV. ASTA. A-153			
F17	1/2"	PIPE SCH. 40 SMLS. GALV. ASTA. A-153			
F18	1/2"	PIPE SCH. 40 SMLS. GALV. ASTA. A-153			
F19	1/2"	PIPE SCH. 40 SMLS. GALV. ASTA. A-153			
F20	1/2"	PIPE SCH. 40 SMLS. GALV. ASTA. A-153			
F21	1/2"	PIPE SCH. 40 SMLS. GALV. ASTA. A-153			
F22	1/2"	PIPE SCH. 40 SMLS. GALV. ASTA. A-153			
F23	1/2"	PIPE SCH. 40 SMLS. GALV. ASTA. A-153			
F24	1/2"	PIPE SCH. 40 SMLS. GALV. ASTA. A-153			
F25	1/2"	PIPE SCH. 40 SMLS. GALV. ASTA. A-153			
F26	1/2"	PIPE SCH. 40 SMLS. GALV. ASTA. A-153			
F27	1/2"	PIPE SCH. 40 SMLS. GALV. ASTA. A-153			
F28	1/2"	PIPE SCH. 40 SMLS. GALV. ASTA. A-153			
F29	1/2"	PIPE SCH. 40 SMLS. GALV. ASTA. A-153			
F30	1/2"	PIPE SCH. 40 SMLS. GALV. ASTA. A-153			
F31	1/2"	PIPE SCH. 40 SMLS. GALV. ASTA. A-153			
F32	1/2"	PIPE SCH. 40 SMLS. GALV. ASTA. A-153			
F33	1/2"	PIPE SCH. 40 SMLS. GALV. ASTA. A-153			
F34	1/2"	PIPE SCH. 40 SMLS. GALV. ASTA. A-153			
F35	1/2"	PIPE SCH. 40 SMLS. GALV. ASTA. A-153			
F36	1/2"	PIPE SCH. 40 SMLS. GALV. ASTA. A-153			
F37	1/2"	PIPE SCH. 40 SMLS. GALV. ASTA. A-153			
F38	1/2"	PIPE SCH. 40 SMLS. GALV. ASTA. A-153			
F39	1/2"	PIPE SCH. 40 SMLS. GALV. ASTA. A-153			
F40	1/2"	PIPE SCH. 40 SMLS. GALV. ASTA. A-153			
F41	1/2"	PIPE SCH. 40 SMLS. GALV. ASTA. A-153			
F42	1/2"	PIPE SCH. 40 SMLS. GALV. ASTA. A-153			
F43	1/2"	PIPE SCH. 40 SMLS. GALV. ASTA. A-153			
F44	1/2"	PIPE SCH. 40 SMLS. GALV. ASTA. A-153			
F45	1/2"	PIPE SCH. 40 SMLS. GALV. ASTA. A-153			
F46	1/2"	PIPE SCH. 40 SMLS. GALV. ASTA. A-153			
F47	1/2"	PIPE SCH. 40 SMLS. GALV. ASTA. A-153			
F48	1/2"	PIPE SCH. 40 SMLS. GALV. ASTA. A-153			
F49	1/2"	PIPE SCH. 40 SMLS. GALV. ASTA. A-153			
F50	1/2"	PIPE SCH. 40 SMLS. GALV. ASTA. A-153			
F51	1/2"	PIPE SCH. 40 SMLS. GALV. ASTA. A-153			
F52	1/2"	PIPE SCH. 40 SMLS. GALV. ASTA. A-153			
F53	1/2"	PIPE SCH. 40 SMLS. GALV. ASTA. A-153			
F54	1/2"	PIPE SCH. 40 SMLS. GALV. ASTA. A-153			
F55	1/2"	PIPE SCH. 40 SMLS. GALV. ASTA. A-153			
F56	1/2"	PIPE SCH. 40 SMLS. GALV. ASTA. A-153			
F57	1/2"	PIPE SCH. 40 SMLS. GALV. ASTA. A-153			
F58	1/2"	PIPE SCH. 40 SMLS. GALV. ASTA. A-153			
F59	1/2"	PIPE SCH. 40 SMLS. GALV. ASTA. A-153			
F60	1/2"	PIPE SCH. 40 SMLS. GALV. ASTA. A-153			
F61	1/2"	PIPE SCH. 40 SMLS. GALV. ASTA. A-153			
F62	1/2"	PIPE SCH. 40 SMLS. GALV. ASTA. A-153			
F63	1/2"	PIPE SCH. 40 SMLS. GALV. ASTA. A-153			
F64	1/2"	PIPE SCH. 40 SMLS. GALV. ASTA. A-153			
F65	1/2"	PIPE SCH. 40 SMLS. GALV. ASTA. A-153			
F66	1/2"	PIPE SCH. 40 SMLS. GALV. ASTA. A-153			
F67	1/2"	PIPE SCH. 40 SMLS. GALV. ASTA. A-153			
F68	1/2"	PIPE SCH. 40 SMLS. GALV. ASTA. A-153			
F69	1/2"	PIPE SCH. 40 SMLS. GALV. ASTA. A-153			
F70	1/2"	PIPE SCH. 40 SMLS. GALV. ASTA. A-153			
F71	1/2"	PIPE SCH. 40 SMLS. GALV. ASTA. A-153			
F72	1/2"	PIPE SCH. 40 SMLS. GALV. ASTA. A-153			
F73	1/2"	PIPE SCH. 40 SMLS. GALV. ASTA. A-153			
F74	1/2"	PIPE SCH. 40 SMLS. GALV. ASTA. A-153			
F75	1/2"	PIPE SCH. 40 SMLS. GALV. ASTA. A-153			
F76	1/2"	PIPE SCH. 40 SMLS. GALV. ASTA. A-153			
F77	1/2"	PIPE SCH. 40 SMLS. GALV. ASTA. A-153			
F78	1/2"	PIPE SCH. 40 SMLS. GALV. ASTA. A-153			
F79	1/2"	PIPE SCH. 40 SMLS. GALV. ASTA. A-153			
F80	1/2"	PIPE SCH. 40 SMLS. GALV. ASTA. A-153			
F81	1/2"	PIPE SCH. 40 SMLS. GALV. ASTA. A-153			
F82	1/2"	PIPE SCH. 40 SMLS. GALV. ASTA. A-153			
F83	1/2"	PIPE SCH. 40 SMLS. GALV. ASTA. A-153			
F84	1/2"	PIPE SCH. 40 SMLS. GALV. ASTA. A-153			
F85	1/2"	PIPE SCH. 40 SMLS. GALV. ASTA. A-153			
F86	1/2"	PIPE SCH. 40 SMLS. GALV. ASTA. A-153			
F87	1/2"	PIPE SCH. 40 SMLS. GALV. ASTA. A-153			
F88	1/2"	PIPE SCH. 40 SMLS. GALV. ASTA. A-153			
F89	1/2"	PIPE SCH. 40 SMLS. GALV. ASTA. A-153			
F90	1/2"	PIPE SCH. 40 SMLS. GALV. ASTA. A-153			
F91	1/2"	PIPE SCH. 40 SMLS. GALV. ASTA. A-153			
F92	1/2"	PIPE SCH. 40 SMLS. GALV. ASTA. A-153			
F93	1/2"	PIPE SCH. 40 SMLS. GALV. ASTA. A-153			
F94	1/2"	PIPE SCH. 40 SMLS. GALV. ASTA. A-153			
F95	1/2"	PIPE SCH. 40 SMLS. GALV. ASTA. A-153			
F96	1/2"	PIPE SCH. 40 SMLS. GALV. ASTA. A-153			
F97	1/2"	PIPE SCH. 40 SMLS. GALV. ASTA. A-153			
F98	1/2"	PIPE SCH. 40 SMLS. GALV. ASTA. A-153			
F99	1/2"	PIPE SCH. 40 SMLS. GALV. ASTA. A-153			
F100	1/2"	PIPE SCH. 40 SMLS. GALV. ASTA. A-153			



- GENERAL NOTES:**
1. SOUNDING TUBES SHALL BE INSTALLED IN THE DEEPEST PART OF THE TANK. SEE SCH. 40 SMLS. ALL OTHERS TO BE AS SHOWN.
 2. CHECK FOR PROPER LOCATION OF SOUNDINGS DETALS.
 3. SEE DET. 2-A FOR ALL FILLS VENTS & SOUNDINGS DETALS.
 4. SEE DET. 2-B FOR SOUNDRING TANK VENT.
 5. SOUNDING FOR PORT BALLAST TANK TO BE 8" PET COCKS SPACED 6" APART VERTICALLY.
 6. SEE DET. 2-C FOR SECTION 1-1.
- NOTE:**
- CHECK ENGINE COMPASS LOCATION OF DECK EQUIPMENT & MANHOLES TO CLEAR FILLS VENTS & SOUNDINGS.
- SEE DET. 2-D FOR 1.0 TANK SOUNDING LEVELMETER TO BE SOUNDRING BY SWANHOUS.

